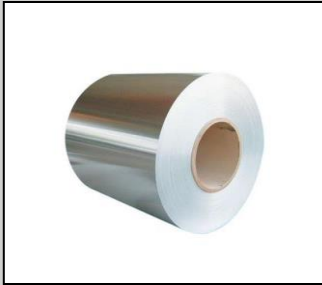


Technical Information Sheet



UNA-CLAD™ Aluminum Architectural Sheet & Coil

Item Description

0.032" (.81 mm) , 0.040" (1 mm), 0.050" (1.3 mm) and 0.063" (1.6 mm) gauge

Description

UNA-CLAD Aluminum Architectural Sheet & Coil is aluminum sheet conforming to ASTM B209 standards. An optional strippable protection film is applied for protection during fabrication and installation. Elevate UNA-CLAD Aluminum Architectural Sheet & Coil is for general sheet metal use in building applications.

Method of Application

1. Install in accordance with recognized sheet metal practices.
2. UNA-CLAD aluminum can be cut, formed, and fastened using conventional hand or power tools.
3. For best results cutting tool edges should be kept sharp, clean, properly dressed, and closely aligned.
4. Fabrication and erection can be accomplished with strippable plastic film in place. Equipment adjustments may need to be made for the film thickness. Film should be removed from areas of concealed or joined pieces.

Storage and Packaging

- Elevate metal sheet and coil should be stored in a well ventilated, dry place where no moisture can contact them. Moisture (from rain, snow, condensation, etc.) trapped between layers of material may cause water stains or white rust, which can affect the service life of the material and will detract from its appearance.
- If outdoor storage cannot be avoided, protect the panels with a ventilated canvas or waterproof paper cover. Do not use plastic, which can cause condensation. Keep the material off the ground in an inclined position with an insulator such as wood.
- Storage of end-use materials with protective film applied to the surface should be:
 - Less than six months with masking applied (warehouse storage and outdoor exposure combined).
 - Stored in an enclosed building or holding facility.
 - Wrapped/packaged to prevent exposure to direct UV, water, oils, or other contaminants.
 - Protective film may become brittle with long term UV exposure.
 - Maintained in an environment within a temperature range of 45 to 90 °F (7 to 32 °C) and 20 to 80% relative humidity.
- Maximum 2,000 lb of sheets per pallet

Precautions

- Product should not be used in areas of high abrasion or where it is subject to mechanical damage.
- Product is pre-finished material; care must be exercised during fabrication and erection to avoid surface damage.
- Elevate recommends a minimum bend radius of 2T for .032" (.81 mm) and .040" (1 mm) materials and a 3T bend radius for any material .050" (1.3 mm) or greater. Anything less than these bend radiuses can cause crazing to the material.
- Attention should be paid to good house-keeping practices.
- Tools must be clean and properly dressed.
- Avoid dragging sheets over surfaces which may scratch or mar the finish.
- For general sheet metal use in building applications.
- Do not cut with power saws or abrasive blades.
- Refer to Safety Data Sheets (SDS) for safety information.

LEED® Information

Post-Consumer Recycled Content: 50 - 65 %

Pre-Consumer Recycled Content: 18 - 38 %

Manufacturing Location: Anoka, MN

NOTE: LEED® is a registered trademark of the U.S. Green Building Council



Product Size		
Gauge	Weight lb/ft ²	Weight kg/m ²
0.032	0.456	2.20
0.040	0.576	2.75
0.050	0.720	3.50
0.063	0.907	4.40
Gauge	Slit Coil Dimensions	Sheet Dimensions
0.032	4.0" (0.1 m) - 48" (1.2 m)*	48" (1.2 m) x 96" (2.4 m), 120" (3.1 m) & 144" (3.7 m)*
0.040	4.0" (0.1 m) - 48" (1.2 m)*	48" (1.2 m) x 96" (2.4 m), 120" (3.1 m) & 144" (3.7 m)*
0.050	4.0" (0.1 m) - 48" (1.2 m)*	48" (1.2 m) x 96" (2.4 m), 120" (3.1 m) & 144" (3.7 m)*
0.063	4.0" (0.1 m) - 48" (1.2 m)*	48" (1.2 m) x 96" (2.4 m), 120" (3.1 m) & 144" (3.7 m)*

NOTE: * May not be available in all colors, gauges, or widths. Additional lead times may apply. Contact your Regional Technical Coordinator for additional information.

NOTE: * May not be available in all gauges or widths. Additional lead times may apply. Contact your Regional Technical Coordinator for additional information.

Typical Properties of Base Material	
Property	Value
Standard	ASTM B209, Aluminum Association, Standard for Specification, Sheets and Coils
Base Metal	Aluminum 3105
Minimum Yield	21 KSI (145 MPa)
Co-efficient of Thermal Expansion	12.6 x 10 ⁻⁶ in/in/ °F (22.2 m/m.K x 10 ⁻⁶)
Modules of Elasticity	10.0 x 10 ³ x KSI (68.9 MPa)

Please contact Holcim Technical Services at 800-428-4511 for further information.

This sheet is meant to highlight Elevate products and specifications and is subject to change without notice. Holcim takes responsibility for furnishing quality materials that meet published Elevate product specifications or other technical documents, subject to normal manufacturing tolerances. Neither Holcim nor its representatives practice architecture. Holcim offers no opinion on and expressly refuses any responsibility for the soundness of any structure. Holcim accepts no liability for structural failure or resultant damages. Consult a competent structural engineer prior to installation if the structural soundness or structural ability to properly support a planned installation is in question. No Holcim representative is authorized to vary this disclaimer.