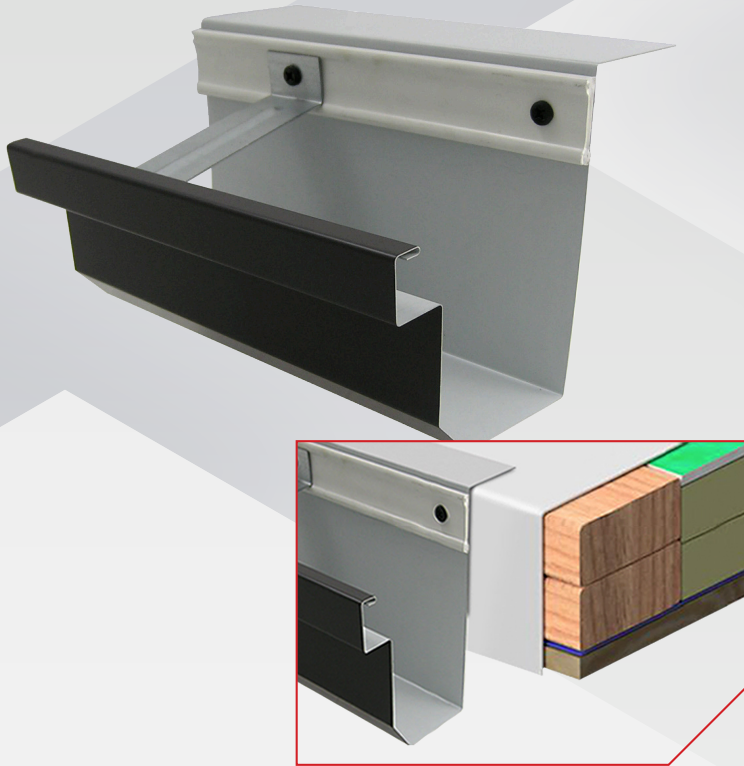


# DX GUTTER



## PRODUCT DESCRIPTION

Elevate DX-Style Gutter features a 45-degree beveled edge for increased aesthetic appeal.

Accommodating to most roof conditions, this gutter system can adapt to various roof pitches for a reliable installation.

## FEATURES

- Front edge of gutter is 2" lower than the back edge.
- This gutter system is provided with internal support straps and splice plates, for a seamless connection.
- Riveted inside and outside miters can be fabricated to nearly any angle.
- Roof flanges can be bent to accommodate various roof pitches or can be eliminated altogether as needed.
- Available in DX-4, DX-5, and DX-6 and custom sizes are available.

## CODES & STANDARDS

ANSI/SPRI/FM4435/ES-1

## INSTALLATION

- 1] Install in accordance with Elevate Detail 2091.
- 2] For any deviation from the requirements set forth in detail drawings, please contact your Regional Technical Coordinator at (800) 428-4511.

MATERIAL	THICKNESS	FINISH
Aluminum	0.040 in.	Mill or PVDF
Stainless Steel	24 gauge	N/A
Bonderized Steel	24 gauge	N/A
Galvalume®	24 gauge	Mill or PVDF
Copper	16 oz.	Mill

Talk to your Elevate rep or visit [HolcimElevate.com](http://HolcimElevate.com) to learn more.



FIND YOUR REP